

TECH TIP!

Check out our Holesaw Assembly Guide Below for fitting adaptors to holesaws sized 32mm+





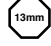

Take the adaptor and turn the knurled ring anti-clockwise to retract the drive pins into the position shown.
Screw the desired holesaw onto the adaptor until its finger tight.



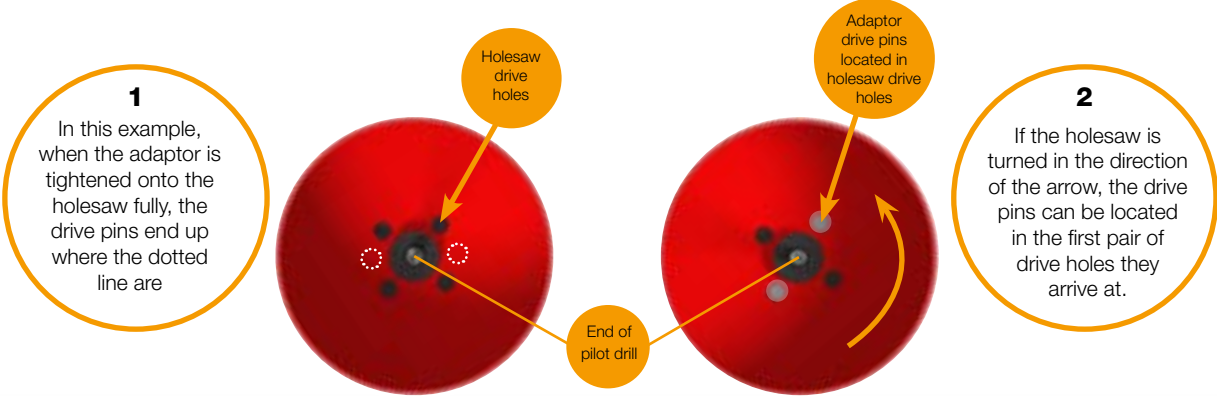
On the back plate of the holesaw are 4 drive pin location holes situated around the adaptor screw thread hole. The hole saw should be 'backed off' until the first pair of drive pin location holes line up with the adaptor drive pins.



Screw the knurled ring clockwise to locate adaptor drive pins into the holes on the back of the holesaw. Notice the gap between the holesaw and the adaptor. This is necessary to prevent the holesaw locking onto the adaptor during the drilling process.

Holesaw Accessories					
Description	Suitable for Size	Shank	Thread	Grub Screw	Part Number
9.5mm Hexagon Shank Drive Arbor	14 - 29mm		1/2" - 20 (U.N.F)	M8x6	CHD16-29HEX
SDS Plus Shank Drive Arbor	14 - 29mm		1/2" - 20 (U.N.F)	M8x6	CHD16-29SDS
13mm Hexagon Shank Drive Arbor	32 - 152mm		5/7" - 18 (U.N.F)	M8x14	CHD32-64HEX
SDS Plus Shank Drive Arbor	32 - 152mm		5/8" - 18 (U.N.F)	M8x14	CHD32-64SDS

Description	Diameter (mm)	Overall Length (mm)	Working Length (mm)	Technical Details	Part Number
Holesaw Pilot Drill	1/4"	74	35	Flute ground, HSS Pilot drill suitable for all holesaws	CHPD



TECH TIP!

For holesaw sizes 19-24mm both holesaw and adaptor have spanner flats to aid disassembly